

The French school system

General principles

- State schools & private schools co-exist.
- 83% of all French pupils are schooled in the state system.
- The state alone awards certificates.
- Schooling is compulsory from the age of 6 to the age of 16.
- The state must provide free schooling.
- Teachers and students must show political and philosophical and religious neutrality.

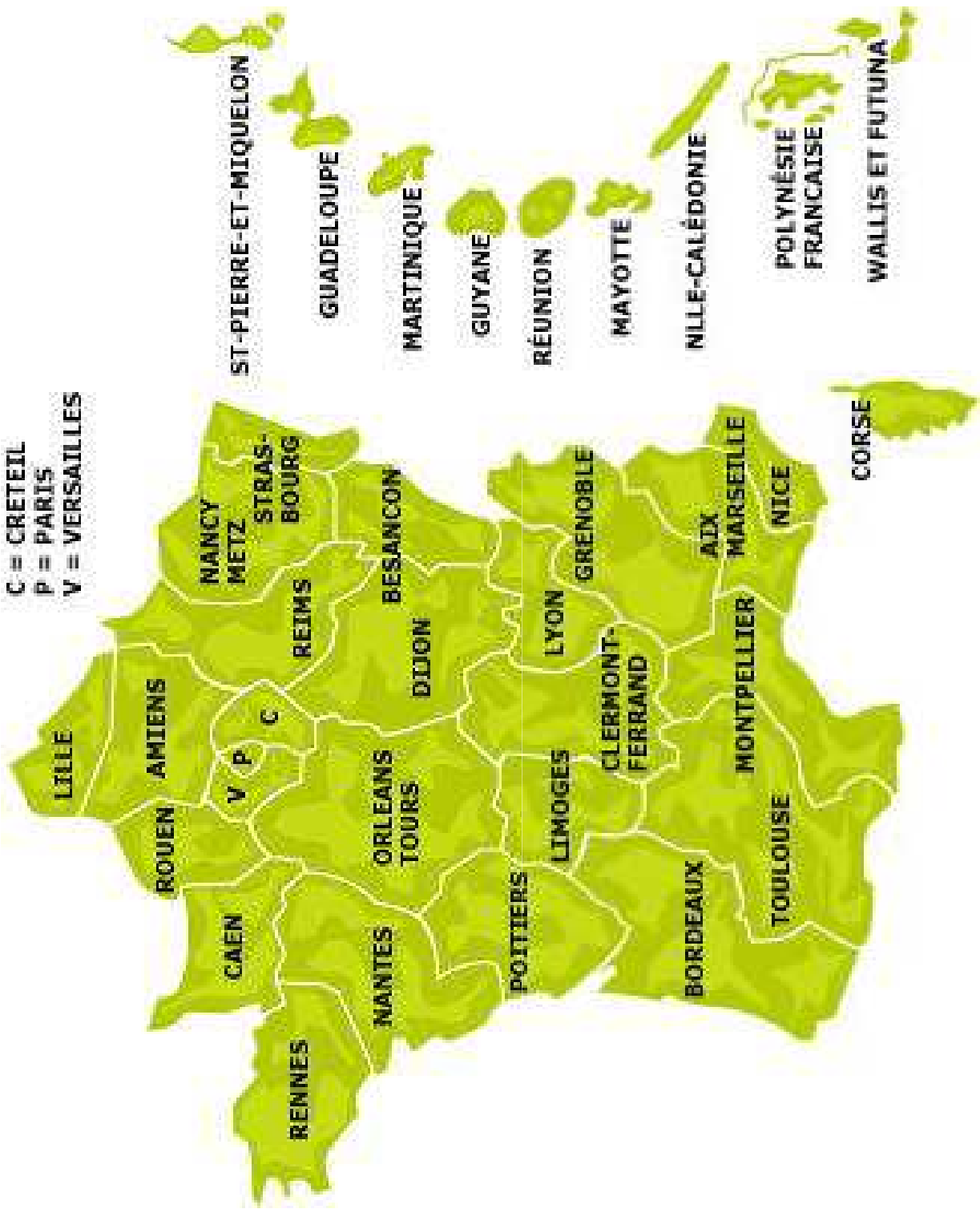
Primary, secondary and higher education

- **« Primary » schools**: nursery schools (2/3-5 yrs. old) + elementary schools (6-11 yrs. old).
 - 6,760,600 pupils
- **Secondary schools**:
 - Lower secondary schools = « *collèges* » (11-15 yrs. old)
 - Upper secondary schools = « *lycées* » (15-18 yrs. old): general / general and technological / vocational *lycées*
 - 5,472,900 pupils
- **Higher education**

Devolved powers

- Since the 1980s.
- Aim: to enforce the role of local authorities in the management of the school system.
- Building, equipment and running costs are divided between the various local authorities.
- The « *Recteur* » is the representative of the Minister for Education, at local level, within « *académies* ».
- 30 local education authorities in France.

C = CRETEIL
P = PARIS
V = VERSAILLES



Main players

(1/4)

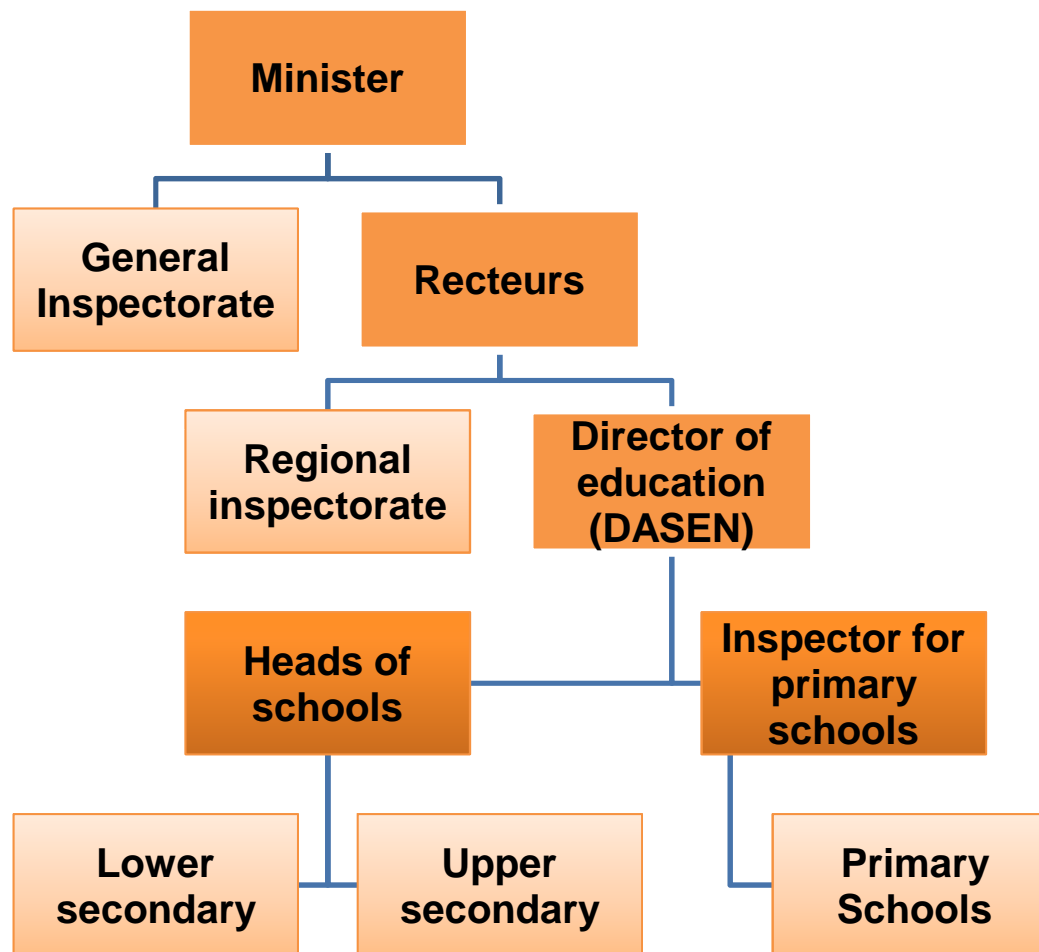


The Direction Générale de l'Enseignement SCOLAire is in charge of:

- Curriculum from nursery to upper secondary schools
- examination and diplomas
- Recruitment, training, salary of teachers, management

Education players

(3/4)



Education players - TEACHERS (4/4)

- 839,700 primary and secondary school teachers
- Recruited through national competitive exams (in secondary teaching, vocational teaching or P.E. teaching)
- A two-year Master's degree is required.
- Successful candidates become trainee teachers.

The « *Académie de Lille* »

The second largest *académie* in France

- 460,957 primary school students
- 390,304 secondary school students
- 158,079 post-secondary school students
- 3,384 primary schools
- 852 secondary schools
- A very diverse school population